

PROCEDURE FOR REPAIRING A SPA COVER: INSTALLATION OF A SELF-ADHESIVE LEATHERETTE PATCH



1. Using alcohol, thoroughly clean the surface where you want to apply the self-adhesive leatherette patch.

2. Allow the surface to dry completely.



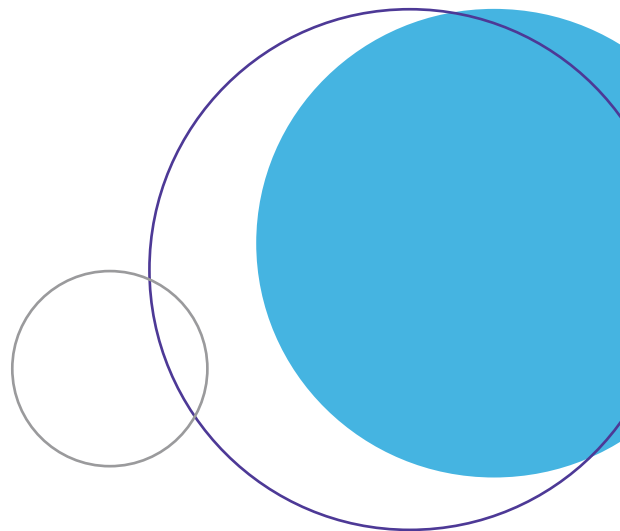
3. Peel the film at the back of the self-adhesive leatherette.

4. Stick the patch on and apply pressure for 30 seconds.



5. Using a hair dryer, heat the patch for a few seconds for better adhesion.

Warning: Do not overheat to avoid altering the colour or drying out the vinyl.



For any questions, please contact our service department

1 866 995-8646, extension 6201